

i-Tech Services
**FEATURED
PRODUCT**
MONTHLY | ISSUE 5



TOOLING DEPLOYMENT UNIT

Seamless subsea operations is our aim. Our Tooling Deployment Unit is a great example of where we've developed our tools to achieve this. When combined with our unique Multi Torque Tool you can move seamlessly between subsea tasks without the need to recover to deck for tool change outs, saving significant offshore time and cost. It can be controlled by a simple laptop and gathers the data you need to make more informed decisions.

Read about how we do it, *overleaf*.

We're a global provider of integrated engineering services and products throughout the oil and gas field life cycle. We focus on what matters most to you: reducing complexity, improving performance and lowering costs. We're all about using innovation and technology to unlock value.

TOOLING DEPLOYMENT UNIT

Deployed from a work class ROV, the dual point Tool Deployment Unit (TDU) ensures a safe and efficient intervention operation. Comes complete with ISO standard twin docking probes, with additional option of a heavy duty gripper.

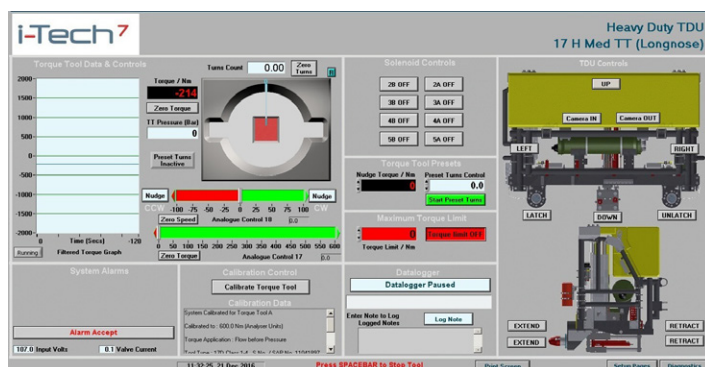
From the earliest days of ROV remote intervention i-Tech Services has been pioneering new developments in Tooling Deployment Units. These developments include interfaces and performance envelopes such as those of our dual point TDU.

Developments of our tooling continue to evolve, shaped by customer feedback and operational lessons learned. A great example of this is the recent upgrade of the dual point TDU. This combines the tried and tested reliability of the original TDU design with the flexibility of an updated control system. The proportional control feature of the new system increases precision and enables time and cost savings.

The built in data logging feature enables the key parameters of the torque tool operations to be recorded and saved for subsequent analysis of the number of turns and torque output applied during valve operations. All with a time and date stamp to allow these operations to be matched to ROV dive logs or video footage.

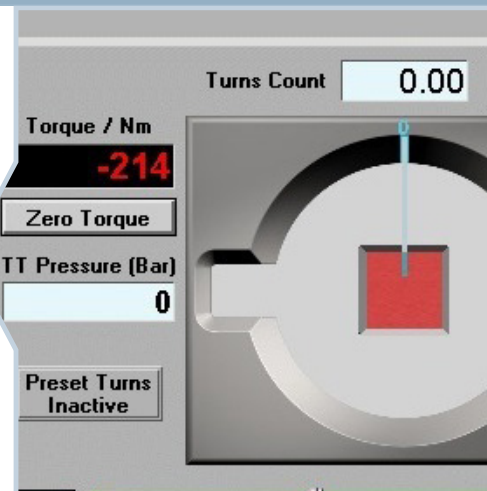
All of our TDU functions can now be controlled from a single laptop computer at surface, with real-time torque feedback for torque tool operations and variable force output from Linear Override Tools.

Combine this capability with the unique [i-Tech Services Multi Torque Tool](#) and you have a truly flexible system which can move from task to task, without the need to recover to deck to reconfigure between operations.



Want to know more about our Tooling Deployment Unit?
Contact: itechservices.clientenquiry@subsea7.com

www.i-tech7.com
i-Tech Services is a Subsea 7 company



- Data logging allows easy analysis of torque outputs applied during valve operations.
- Time and date stamps allow easy matching to ROV dive logs or video footage.
- Save time and cost with our updated TDU control system and proportional output to the tooling.
- Real-time torque feedback.
- Combine the TDU with our Multi Torque Tool and there's no need to recover to the surface for tool change outs, allowing for seamless subsea operations.